

Impact Report 2025

Sustainability Highlights 2025



Powering digital life responsibly

Digital infrastructure has become an integral part of everyday life. From how we work and learn, to how we manage our finances, healthcare, and public services. Digital systems operate quietly in the background, shaping society to function smoothly and touching lives in a positive way. Data centers form the backbone of every day digital life. Our role is rarely visible, but our impact is profound.

At LCL, we believe that advancing this digital backbone comes with responsibility. Our task is to provide reliable, secure, and high-performing infrastructure in a way that minimises negative impact and maximises long-term value for society.

LCL offers almost 25 years of data center and colocation experience and knowledge.

LCL now operates five independent data centers in Antwerp (LCL Antwerp), Diegem (LCL Brussels-North), Huizingen (LCL Brussels-South), Aalst (LCL Brussels-West) and Gembloux (LCL Wallonia One).

Turnover (million)

€ 42.60

EBITDA margin

47.61%



Reducing our carbon footprint

We are committed to reducing our environmental footprint through action on climate change, water management, and green buildings.

AMBITION

Reducing direct and indirect carbon emissions

Reducing water consumption

TARGET

By 2035 we will reduce our Scope 1 and 2 emissions by 91.91% *

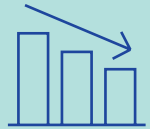
By 2035 we will reduce our Scope 3 emissions by 66.33% (per kilowatt installed data center capacity) *

By 2030 we will reduce our Water Usage Effectiveness (WUE) to 0.4l/kWh

PROGRESS IN 2025

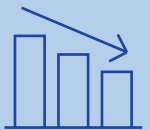
Scope 1 & 2 emissions reduction versus base year 2020

63.75%



Scope 3 emissions reduction versus base year 2020

43.77%



Water Usage Effectiveness

0.07 l/kWh

* against a 2020 baseline

OUR CLIMATE TRANSITION PLAN

Wind energy expansion

Solar energy deployment

Water management

HVO100 implementation

Greener fleet transformation

Cooling system upgrades

PROGRESS IN 2025

Three wind turbines of 2.3 MW each were successfully installed in April 2025.

In 2025, a new solar park was built on the roofs of four farms in East and West Flanders, and solar panels are being added to our LCL Brussels-North and LCL Brussels-West sites.

We have closed water circuits that recirculate water instead of losing it through evaporation. This significantly reduces our water footprint.

We invested in a rainwater recovery system at LCL Wallonia One.

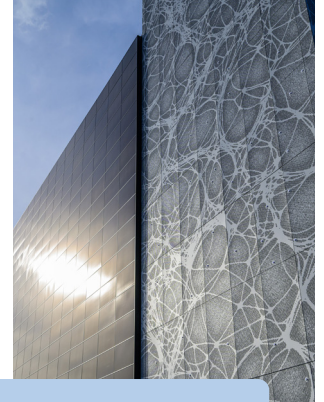
The transition to HVO100 renewable fuel was completed for three of our sites in 2025. We will continue the project in 2026 for the remainder of our sites.

Currently, 41% of the company's vehicles are fully electric, and hybrid and electric vehicles together account for 80% of the leased company car fleet.

Projects to enhance cooling systems remain on track, progressing according to the initial planning. In 2025, the LCL Brussels-West data center completed the first phase of its cooling upgrade.

Production of own renewable energy (solar + wind)

38.3%



All purchased electricity is green electricity

100%



To enable the climate transition, we invested in projects that amount to EUR 13.94 million in 2025.

Being a people business

In 2025, we reinforced our commitment to employee wellbeing, talent development, community investment, and ethical business practices, embedding them in our long-term strategy.

NGOs and not-for-profit associations supported by LCL:

Het balanske, Join for Water, Oxfam, De Hoeve (a department of De Vijver), Close the Gap, Out of Use.



Initiatives that promote health & wellbeing

10



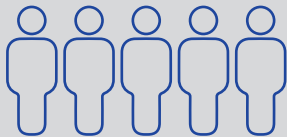
Additional new Board members

2



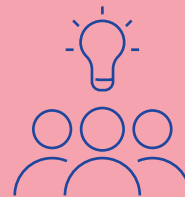
New colleagues on a total of 56 employees on the payroll

13



Training days per employee in 2025
(vs 8.6 in 2024)

8.44



EcoVadis Platinum

95/100

About the cover

Contrary to the saying, you can judge our Impact Report by its cover. At the end of March 2026, LCL opened its newest and largest data center in Diegem, marking an important step towards strengthening secure, sovereign, and future-ready digital infrastructure in Belgium and Europe. Designed to meet the highest standards in reliability, security, and sustainability, the site supports the growing demand for critical data, cloud connectivity, and AI applications. Strikingly, the building is crowned by The Cloud, a monumental artwork by Luk Van Soom.

The idea of a cloud sculpture on the roof came from our CEO Laurens van Reijen. Van Soom – together with designers René Pijnenburg and Béla Zsigmond, and chief architect Luc De Hovre – then translated that vision into a clear visual narrative, with a facade design to support the artwork. The new landmark along the Brussels Ring reflects the role LCL aims to play in society: making essential yet largely invisible infrastructure visible and connected to its surroundings. Below, we share an excerpt from Luk Van Soom's speech at the inauguration of the artwork:

...
*Art rarely appears in graphs.
But perhaps something else happens.
I believe this image will stay with people
who pass by here.
On a train.
On the motorway.
On a bicycle.
Or in a plane taking off nearby.
And maybe someone will look up for
a moment...
see a cloud...
smile... and, just for a second...
think of...
FREEDOM.*



Discover more in our
2025 Impact Report



www.lcl.be